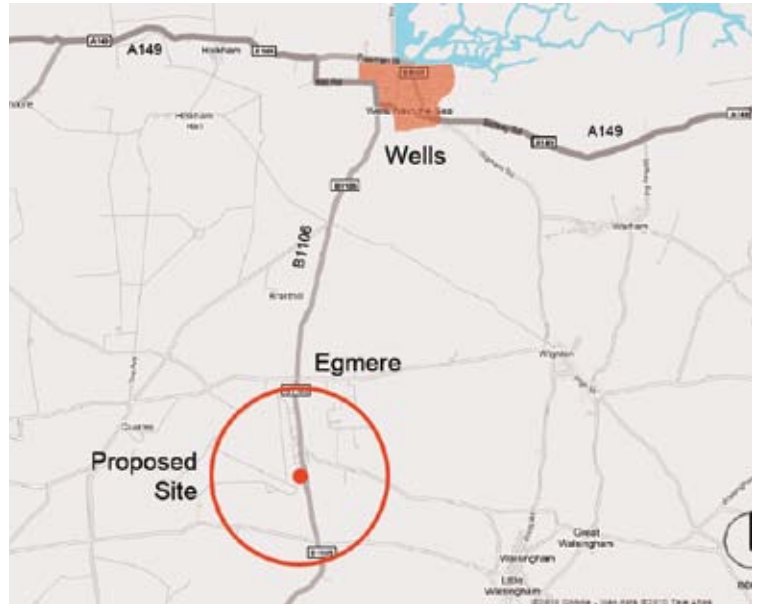


Sheringham Shoal

by Scira Offshore Energy
July 2010

Proposed operational base

The Sheringham Shoal Offshore Wind Farm is now under construction off the coast of North Norfolk directly north of the town of Sheringham. Once in operation, it will require daily maintenance by teams of wind turbine technicians travelling to and from the new outer harbour at Wells-next-the-Sea. It is proposed that these technicians, and Scira Offshore Energy management and administration, be based at a new office and storage facility at Egmere. The proposed base will include 800sqm of office space and 500sqm of warehousing, as well as car parking and landscaping.



Artist impression of proposed operational base.

Frequently asked questions

When will work start/finish?

The work is planned to begin by January 2011 and continue until November 2011.

How will this development affect traffic - during construction and in the long term?

During the construction of the facility, three to four delivery lorries will arrive and depart each day during the week, excluding weekends, with around 15 contractors' cars and small vans on-site.

Once completed and occupied, up to 40 cars will park there each day and two minibuses will transport workers from the site, to the new outer harbour at Wells-next-the-Sea, and back each morning and evening. There will also be deliveries by vans each day and deliveries by HGVs each week.

Who will build this and what is the tender process?

The intention is for only Norfolk-based building contractors to be invited to tender for the construction. Notices are likely to be posted in the local press towards the end of August following the submission of the planning application. The tender documents will be sent to qualifying contractors towards the end of October, with view to construction of the buildings commencing by January 2011.

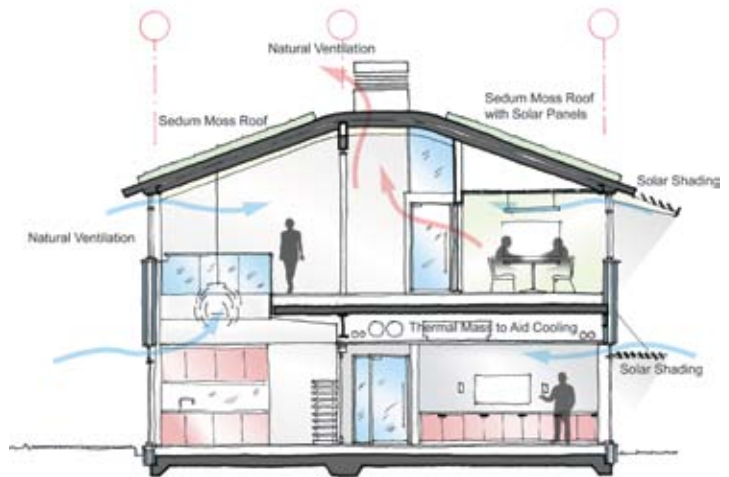
How can local companies be involved with the construction?

Once the main contractor has been selected, they will determine their sub-contracting requirements and look to local sub-contractors to form part of their supply chain. Details of the main contractor will be announced once they have been awarded the tender. Local companies wishing to register their interest in working as sub-contractors with the project can do so via the supplier database registration form on the contact page of www.scira.co.uk.

How many people will work there?

During construction, there will be up to around 80 people on site working with both the main contractor and sub-contractors. Whether these will be existing employees or new positions, will depend on the contractors and sub-contractors selected.

Once the facility has been completed it will be the base for up to 70 employees, most of whom will work on offshore maintenance at the wind farm during the day.



What are the environmental features of the design?

The building will have very low energy consumption, with key features including: low energy lighting, highly insulated walls and roofs, a "green" roof to reduce rainwater run-off, and greywater recycling of rainwater to flush toilets. There will be a minimum of 10% on-site renewable energy sources using Low to Zero (LTC) technologies such as photovoltaic cells and solar water heater collectors for electricity and water heating respectively.

Where will the construction materials come from?

Locally sourced and manufactured building materials will be specified wherever possible.

Construction materials will be responsibly sourced and the site waste management plan will aim for up to 90% of site waste to be diverted from landfill.

How can I make comments?

If you would like to comment on the proposed design concepts, please contact:

LSI Architects LLP
The Old Drill Hall
23a Cattle Market Street
Norwich
NR1 3DY
Phone 01603 660711
Fax 01603 623213
E-mail norwich@LSIarchitects.co.uk

However if you would like further information about the wind farm and its operation, please go to www.scira.co.uk, email info@scira.co.uk or visit the project office and information point at 18 Staithe Street, Wells-next-the-Sea which is open from 0930 to 1700.